

MIDJ
INITALY



Coffee table **Walter**

Walter coffee table con base a quattro gambe in metallo verniciato o cromato. Piano in metallo o ceramica.

Disponibile in due diverse varianti.

Colori e materiali

Struttura



Metallo bianco



Metallo nero



Metallo corda



Metallo Marrone



Metallo grafite



Metallo fango



Metallo Bronzo



Metallo giallo
pastello



Metallo ocre



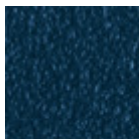
Metallo rosso



Metallo verde salvia



Metallo azzurro



Metallo blu oceano



Metallo grigio chiaro



Metallo rosa cipria



Cromato

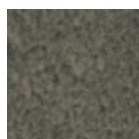
Rivestimento



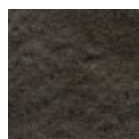
Satinato



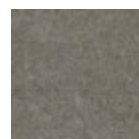
Inox lucido



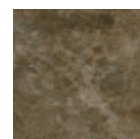
Ceramica piombo



Ceramica savoia
antracite



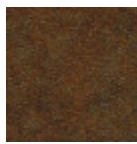
Ceramica savoia
cemento



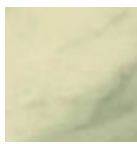
Ceramica marmo
emperador



Ceramica oxide bianco



Ceramica corten

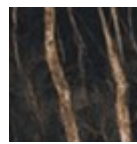


Ceramica marmo calacatta

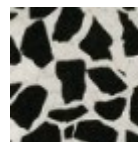
1 colore



Ceramica marmo nero greco lucido

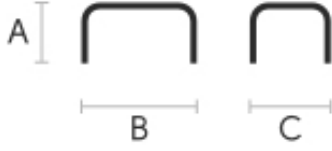


Ceramica marmo noir desir lucido



Ceramica lucida veneziana

Dimensioni



Dati volumetrici

Peso 12 Kg

Volume 0.17 mc

Colli 1

	A (cm) (inch)	B (cm) (inch)	C (cm) (inch)
Walter	50	40	40
40x40 (cm) (inch)	19.7	15.7	15.7
Walter	50	60	40
60x40 (cm) (inch)	19.7	23.6	15.7