

Tavolo Suite scrivania

design AtelierNanni, 2017



Scrivania Suite con base a quattro gambe in legno. Tiranti in metallo e piano in vetro.

Optional: porta documenti in cuoio o cuoio toscano.

Colori e materiali

Struttura



Frassino tinto
8 Colori



Metallo bianco



Metallo blu oceano



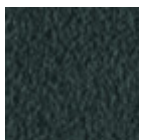
Metallo Bronzo



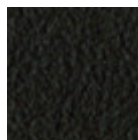
Metallo corda



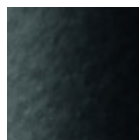
**Metallo giallo
pastello**



Metallo grafite



Metallo Marrone



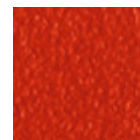
Metallo nero



Metallo ocre



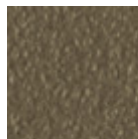
Metallo rosa cipria



Metallo rosso



Metallo verde salvia

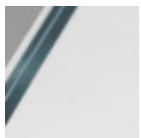


Metallo fango

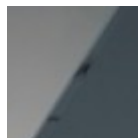


Metallo grigio chiaro

Rivestimento



**Vetro trasparente
extrachiaro**



Vetro lucido fumè



Vetro fumè bucciato

Dimensioni



Dati volumetrici

Peso 54.5 Kg

Volume 0.37 mc

Colli 3

	cm	inch
A	75	29.5
B	140	55.1
C	75	29.5