

MIDJ
INITALY



Sedia **Strike S L**

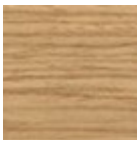
design AtelierNanni, 2017

Sedia Strike con struttura in legno e schienale in metallo verniciato.

Dispone della certificazione CATAS.

Colori e materiali

Struttura



Frassino tinto
8 Colori

Rivestimento



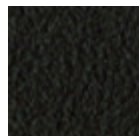
Metallo bianco



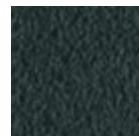
Metallo nero



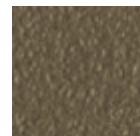
Metallo corda



Metallo Marrone



Metallo grafite



Metallo fango



Metallo Bronzo



**Metallo giallo
pastello**



Metallo ocra



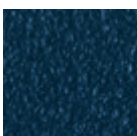
Metallo rosso



Metallo verde salvia



Metallo azzurro



Metallo blu oceano

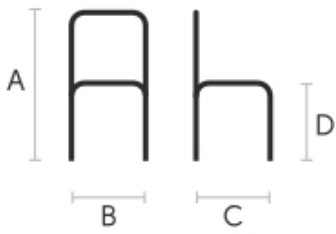


Metallo grigio chiaro



Metallo rosa cipria

Dimensioni



Dati volumetrici

Peso 6 Kg
Volume 0.25 mc
Colli 1

Certificazioni



CATAS
EN 1728

| | cm | inch |
|----------|----|------|
| A | 76 | 29.9 |
| B | 48 | 18.9 |
| C | 50 | 19.7 |
| D | 46 | 18.1 |

Download

3D Strike S (zip) - <https://www.midj.com/images/uploads/resources/strike-s-3d.zip>