

MIDJ
INITALY



Sedia Raff S M BD_T

design Area 44, 2012

La sedia Raff ha struttura a slitta in acciaio verniciato o cromato e scocca in Baydur®.

Adatta ad uso esterno.

Colori e materiali

Struttura



Metallo bianco



Metallo nero



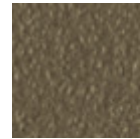
Metallo corda



Metallo Marrone



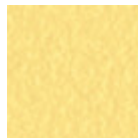
Metallo grafite



Metallo fango



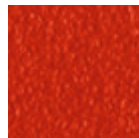
Metallo Bronzo



Metallo giallo
pastello



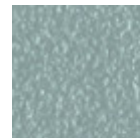
Metallo ocre



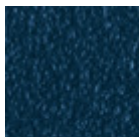
Metallo rosso



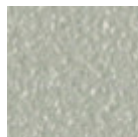
Metallo verde salvia



Metallo azzurro



Metallo blu oceano



Metallo grigio chiaro

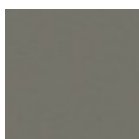


Metallo rosa cipria



Cromato

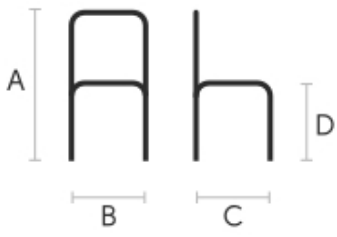
Rivestimento



Baydur

3 Colori

Dimensioni



Dati volumetrici

Peso 7 Kg

Volume 0.34 mc

Colli 1

	cm	inch
A	86	33.9
B	60	23.6
C	56	22.1
D	47	18.5

Download

3D Raff T (zip) - <https://www.midj.com/images/uploads/resources/raff-t-3d.zip>