



Tavolo allungabile Pechino ALL

design Midj R&D, 2014

Tavolo Pechino allungabile con base in metallo verniciato.

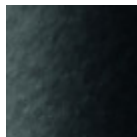
Top disponibile in vetro lucido o satinato.

Colori e materiali

Struttura



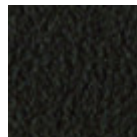
Metallo bianco



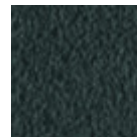
Metallo nero



Metallo corda



Metallo Marrone

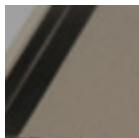


Metallo grafite

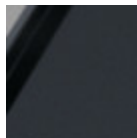


Metallo multicolor

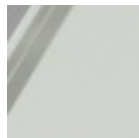
Rivestimento



Vetro satinato
antigraffio corda

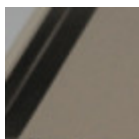


Vetro satinato
antigraffio grafite

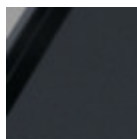


Vetro satinato
antigraffio
extrachiario bianco

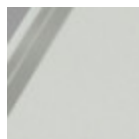
Allunghe



Vetro satinato
antigraffio corda

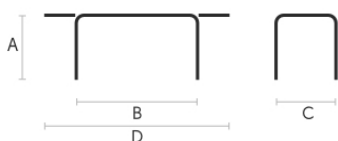


Vetro satinato
antigraffio grafite



Vetro satinato
antigraffio
extrachiario bianco

Dimensioni



A	B	C	D
(cm)	(cm)	(cm)	(cm)
(inch)	(inch)	(inch)	(inch)

160/240x106	72	160	106	240
(cm)	28.3	63	41.7	94.5
(inch)				

190/290x106	72	190	106	290
(cm)	28.3	74.8	41.7	114.2
(inch)				

Dati volumetrici

Peso 233 Kg

Volume 1.12 mc

Colli 4

Download

Pechino allungabile 3D (zip) - <https://www.midj.com/images/uploads/resources/pechino-all-3d.zip>

Pechino fisso 3D (zip) - <https://www.midj.com/images/uploads/resources/pechino-3d.zip>