

**MIDJ**  
INITALY



## Poltroncina Ola P M

design Paolo Vernier, 2016

Poltrona Ola con struttura e sedile in metallo verniciato adatta ad uso outdoor.

La poltrona Ola è impilabile fino a quattro unità.

### Colori e materiali

#### Struttura



Metallo bianco



Metallo nero



Metallo corda



Metallo Marrone



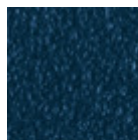
Metallo grafite



Metallo giallo  
pastello



Metallo azzurro



Metallo blu oceano



Metallo Bronzo



Metallo fango



Metallo grigio chiaro



Metallo ocre



Metallo rosa cipria

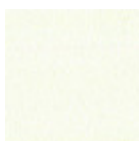


Metallo rosso

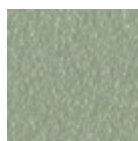


Metallo verde salvia

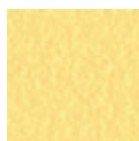
#### Rivestimento



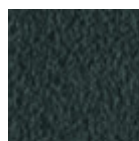
Metallo bianco



Metallo corda



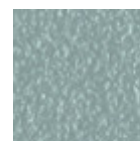
Metallo giallo  
pastello



Metallo grafite



Metallo nero



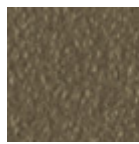
Metallo azzurro



Metallo blu oceano



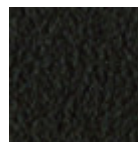
Metallo Bronzo



Metallo fango



Metallo grigio chiaro



Metallo Marrone



Metallo ocra



Metallo rosa cipria

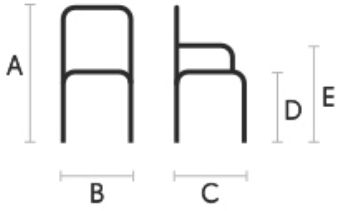


Metallo rosso



Metallo verde salvia

## Dimensioni



	cm	inch
A	82	32.3
B	52	20.5
C	54	21.3
D	45	17.7
E	65	25.6

## Dati volumetrici

**Peso** 7.25 Kg  
**Volume** 0.32 mc  
**Colli** 1