

Coffee table **Ola CT 105**

design Paolo Vernier, 2016

Ola coffee table con struttura e piano in metallo verniciato o effetto industrial.

Adatto per uso esterno.



Colori e materiali

Struttura



Metallo bianco



Metallo nero



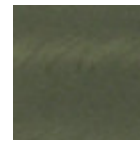
Metallo corda



Metallo Marrone



Metallo grafite

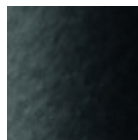


Metallo Industrial

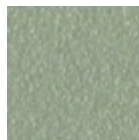
Rivestimento



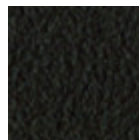
Metallo bianco



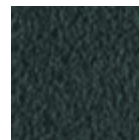
Metallo nero



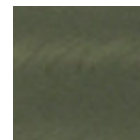
Metallo corda



Metallo Marrone



Metallo grafite



Metallo Industrial

Dimensioni



| | A (cm) (inch) | B (cm) (inch) | C (cm) (inch) |
|-----------------|-------------------------|-------------------------|-------------------------|
| Ola CT | | | |
| 105 (cm) | 50 | 105 | 44 |
| (inch) | 19.7 | 41.3 | 17.3 |

| | A (cm) | B (cm) | C (cm) |
|------------------|---------------|---------------|---------------|
| | (inch) | (inch) | (inch) |
| Ola CT 45 | | | |
| (cm) | 50 | 45 | 44 |
| (inch) | 19.7 | 17.7 | 17.3 |

Dati volumetrici

Peso 10 Kg

Volume 0.24 mc

Colli 1

Download

[.3ds Ola CT 105 \(zip\)](https://www.midj.com/images/uploads/resources/3d-midj-ola-ct-105-3ds.zip) - <https://www.midj.com/images/uploads/resources/3d-midj-ola-ct-105-3ds.zip>