



Poltrona lounge **Ola** **Bench BN M**

design Paolo Vernier, 2016

Panca Ola a due posti in metallo verniciato.

Adatta ad uso esterno e impilabile fino a quattro unità.



Colori e materiali

Struttura



Metallo bianco



Metallo nero



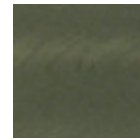
Metallo corda



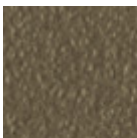
Metallo Marrone



Metallo grafite



Metallo Industrial



Metallo fango



Metallo Bronzo



Metallo giallo
pastello



Metallo ocra



Metallo rosso



Metallo verde salvia



Metallo azzurro



Metallo blu oceano

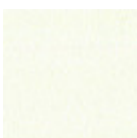


Metallo grigio chiaro

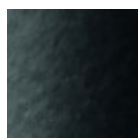


Metallo rosa cipria

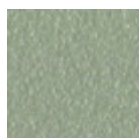
Rivestimento



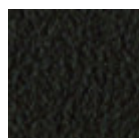
Metallo bianco



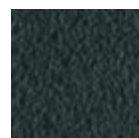
Metallo nero



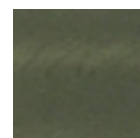
Metallo corda



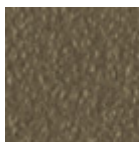
Metallo Marrone



Metallo grafite



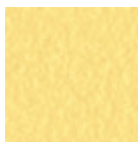
Metallo Industrial



Metallo fango



Metallo Bronzo



Metallo giallo
pastello



Metallo ocra



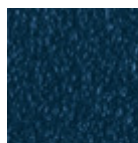
Metallo rosso



Metallo verde salvia



Metallo azzurro



Metallo blu oceano

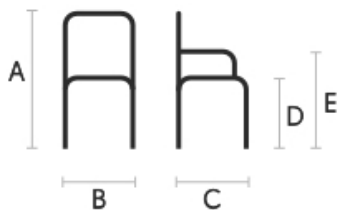


Metallo grigio chiaro



Metallo rosa cipria

Dimensioni



	cm	inch
A	82	32.3
B	114	44.9
C	56	22.1
D	46	18.1
E	65	25.6

Dati volumetrici

Peso 14 Kg

Volume 0.56 mc

Colli 1

Download

[.3ds Ola Bench \(zip\)](https://www.midj.com/images/uploads/resources/3d-midj-ola-bench-bn-m-3ds.zip) - <https://www.midj.com/images/uploads/resources/3d-midj-ola-bench-bn-m-3ds.zip>