

MIDJ INITALY



Tavolo Nenè tondo

design Paolo Vernier, 2013

Tavolo Nenè tondo con base in metallo verniciato.

Top in melaminico o HPL.

Disponibile nelle misure Ø70 cm e Ø80 cm.

Colori e materiali

Struttura



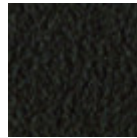
Metallo bianco



Metallo nero



Metallo corda



Metallo Marrone

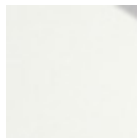


Metallo grafite

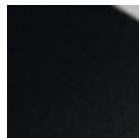
Rivestimento



Melaminico
8 Colori



Hpl bianco bordo
nero



Hpl nero



Hpl cemento



Hpl corten



Hpl bianco bordo
bianco

Dimensioni



	A (cm)	B (cm)	C (cm)
	(inch)	(inch)	(inch)
Ø70 (cm)	75	70	70
(inch)	29.5	27.6	27.6
Ø80 (cm)	75	80	80
(inch)	29.5	31.5	31.5

Dati volumetrici

Peso 19.5 Kg
Volume 0.25 mc
Colli 3