

MIDJ
INITALY

Tavolo Moonlight

design Franco Poli



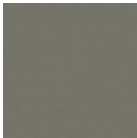
Tavolo fisso Moonlight con base in Baydur.

Top disponibile in ceramica o vetro.

Misure disponibili: 200x100 cm o 220x116 cm.

Colori e materiali

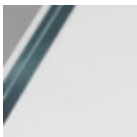
Struttura



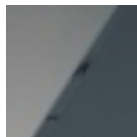
Baydur

3 Colori

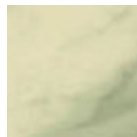
Rivestimento



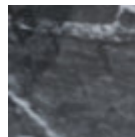
**Vetro trasparente
extrachiario**



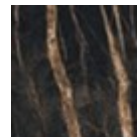
Vetro lucido fumè



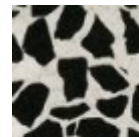
**Cristalceramica
marmo calacatta**



**Cristalceramica
marmo greco nero
lucido**



**Cristalceramica
marmo noir desir**



**Cristalceramica
veneziano**

Dimensioni



	A (cm) (inch)	B (cm) (inch)	C (cm) (inch)
200x100 (cm) (inch)	76 29.9	200 78.7	100 39.4
220x116 (cm) (inch)	76 29.9	220 86.6	116 45.7

Dati volumetrici

Peso 105 Kg

Volume 0.6 mc

Colli 2

Download

3D Moonlight (zip) - <https://www.midj.com/images/uploads/resources/moonlight-3d.zip>