

Coffee table **Lea CT-M**

design Paolo Vernier, 2019



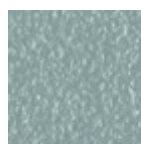
Coffee table Lea con base a quattro gambe in metallo verniciato. Piano in legno o ceramica.

Il coffee table Lea è disponibile in tre diverse dimensioni ed è adatto a giochi di sovrapposizione.

Puro ed essenziale nella forma, il tavolino Lea è perfetto da solo o nelle originali composizioni di piani ad incastro. Dimensioni e materiali diversi creano una soluzione d'arredo versatile, capace di adattarsi ad ogni esigenza e stile d'interior.

Colori e materiali

Struttura



Metallo azzurro



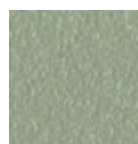
Metallo bianco



Metallo blu oceano



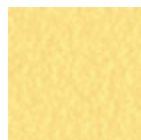
Metallo Bronzo



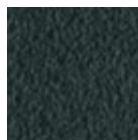
Metallo corda



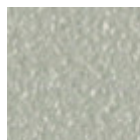
Metallo fango



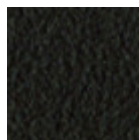
Metallo giallo pastello



Metallo grafite



Metallo grigio chiaro



Metallo Marrone



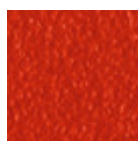
Metallo nero



Metallo ocra



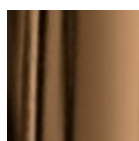
Metallo rosa cipria



Metallo rosso



Metallo verde salvia



Golden bronze

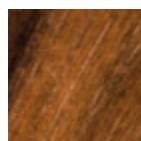


Oro rosa

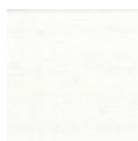


Nichel Nero

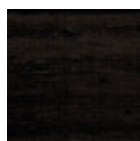
Rivestimento



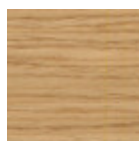
Impiallacciato noce fiammato



Impiallacciato tinto bianco



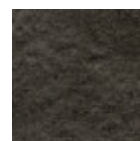
Impiallacciato tinto nero



Impiallacciato tinto rovere naturale



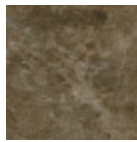
Ceramica piombo



Ceramica savoia antracite



Ceramica savoya cemento

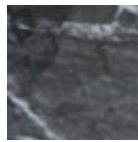


Ceramica marmo emperador

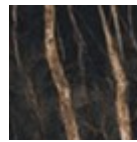


Ceramica marmo calacatta

1 colore



Ceramica marmo nero greco lucido

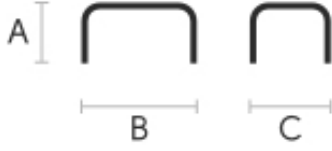


Ceramica marmo noir desir lucido



Cristalceramica veneziano

Dimensioni



Dati volumetrici

Peso 10.5 Kg

Volume 0.11 mc

Colli 1

	A (cm) (inch)	B (cm) (inch)	C (cm) (inch)
Lea CT-M (cm) (inch)	40 15.7	65 25.6	45 17.7
Lea CT-S (cm) (inch)	40 15.7	51 20.1	51 20.1
Lea CT-L (cm) (inch)	34 13.4	108 42.5	39 15.4