

Coffee table Hoodi

design Roberto Paoli

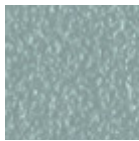
Tavolino Hoodi con gambe in metallo verniciato. Piano disponibile in metallo o rivestito in cuoio.

La collezione Hoodi è composta da tre tavolini dalla forma a mezzaluna, con dimensioni e altezze diversi.



Colori e materiali

Struttura



Metallo azzurro



Metallo bianco



Metallo blu oceano



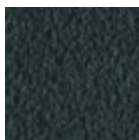
Metallo Bronzo



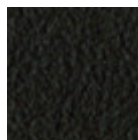
Metallo corda



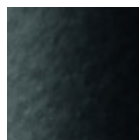
Metallo giallo pastello



Metallo grafite



Metallo Marrone



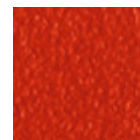
Metallo nero



Metallo ocra



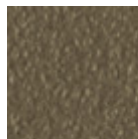
Metallo rosa cipria



Metallo rosso



Metallo verde salvia



Metallo fango



Metallo grigio chiaro

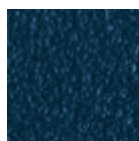
Rivestimento



Metallo azzurro



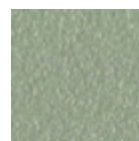
Metallo bianco



Metallo blu oceano



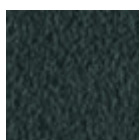
Metallo Bronzo



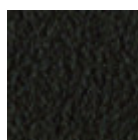
Metallo corda



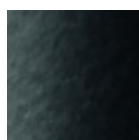
Metallo giallo pastello



Metallo grafite



Metallo Marrone



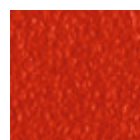
Metallo nero



Metallo ocra



Metallo rosa cipria



Metallo rosso



Metallo verde salvia



Metallo fango

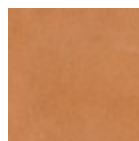


Metallo grigio chiaro



Cuio

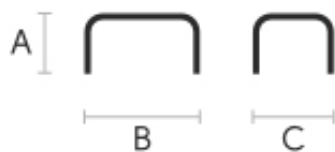
20 Colori



Cuio toscano

3 Colori

Dimensioni



Dati volumetrici

Peso 9 Kg

Volume 0.15 mc

Colli 1

	A (cm) (inch)	B (cm) (inch)	C (cm) (inch)
Hoodi CTS			
(cm)	32	60	30
(inch)	12.6	23.6	11.8
Hoodi CTM			
(cm)	36	68	34
(inch)	14.2	26.8	13.4
Hoodi CTL			
(cm)	40	76	38
(inch)	15.7	29.9	15

Download

[.3ds Hoodi CTL \(zip\)](https://www.midj.com/images/uploads/resources/3d-midj-hoodi-ctl-3ds.zip) - https://www.midj.com/images/uploads/resources/3d-midj-hoodi-ctl-3ds.zip

[.dae Hoodi CTL \(zip\)](https://www.midj.com/images/uploads/resources/3d-midj-hoodi-ctl-dae.zip) - https://www.midj.com/images/uploads/resources/3d-midj-hoodi-ctl-dae.zip

[.dxf Hoodi CTL \(zip\)](https://www.midj.com/images/uploads/resources/3d-midj-hoodi-ctl-dxf.zip) - https://www.midj.com/images/uploads/resources/3d-midj-hoodi-ctl-dxf.zip

[.obj Hoodi CTL \(zip\)](https://www.midj.com/images/uploads/resources/3d-midj-hoodi-ctl-obj.zip) - https://www.midj.com/images/uploads/resources/3d-midj-hoodi-ctl-obj.zip

[.stl Hoodi CTL \(zip\)](https://www.midj.com/images/uploads/resources/3d-midj-hoodi-ctl-stl.zip) - https://www.midj.com/images/uploads/resources/3d-midj-hoodi-ctl-stl.zip

[.3ds Hoodi CTM \(zip\)](https://www.midj.com/images/uploads/resources/3d-midj-hoodi-ctm-3ds.zip) - https://www.midj.com/images/uploads/resources/3d-midj-hoodi-ctm-3ds.zip

[.dae Hoodi CTM \(zip\)](https://www.midj.com/images/uploads/resources/3d-midj-hoodi-ctm-dae.zip) - https://www.midj.com/images/uploads/resources/3d-midj-hoodi-ctm-dae.zip

[.dxf Hoodi CTM \(zip\)](https://www.midj.com/images/uploads/resources/3d-midj-hoodi-ctm-dxf.zip) - https://www.midj.com/images/uploads/resources/3d-midj-hoodi-ctm-dxf.zip

[.obj Hoodi CTM \(zip\)](https://www.midj.com/images/uploads/resources/3d-midj-hoodi-ctm-obj.zip) - https://www.midj.com/images/uploads/resources/3d-midj-hoodi-ctm-obj.zip

[.stl Hoodi CTM \(zip\)](https://www.midj.com/images/uploads/resources/3d-midj-hoodi-ctm-stl.zip) - https://www.midj.com/images/uploads/resources/3d-midj-hoodi-ctm-stl.zip

[.3ds Hoodi CTS \(zip\)](https://www.midj.com/images/uploads/resources/3d-midj-hoodi-cts-3ds.zip) - https://www.midj.com/images/uploads/resources/3d-midj-hoodi-cts-3ds.zip

[.dae Hoodi CTS \(zip\)](https://www.midj.com/images/uploads/resources/3d-midj-hoodi-cts-dae.zip) - https://www.midj.com/images/uploads/resources/3d-midj-hoodi-cts-dae.zip

[.dxf Hoodi CTS \(zip\)](https://www.midj.com/images/uploads/resources/3d-midj-hoodi-cts-dxf.zip) - https://www.midj.com/images/uploads/resources/3d-midj-hoodi-cts-dxf.zip

[.obj Hoodi CTS \(zip\)](https://www.midj.com/images/uploads/resources/3d-midj-hoodi-cts-obj.zip) - https://www.midj.com/images/uploads/resources/3d-midj-hoodi-cts-obj.zip

[.stl Hoodi CTS \(zip\)](https://www.midj.com/images/uploads/resources/3d-midj-hoodi-cts-stl.zip) - https://www.midj.com/images/uploads/resources/3d-midj-hoodi-cts-stl.zip

Certificazioni materiali

Cuio

RESISTENZA AL FUOCO:

Technical Bulletin 117/00 sez E part. 1

EN 1021 parte 1/94, parte 2/94

BS 5852/90

PLUS E VANTAGGI DEL MATERIALE

Il cuoio è un prodotto igienico e molto pratico: resiste all'usura, è impermeabile all'acqua ma, allo stesso tempo, lascia traspirare aria e sudore. Il cuoio è ottenuto dalla pelle di bovini allevati ed abbattuti a scopi alimentari successivamente trattata ai sali di cromo.

NORME DI SMACCHIATURA

La pulizia deve essere fatta esclusivamente con un panno umido non abrasivo, non utilizzare prodotti che contengano solventi o alcool che possono rovinarne la superficie; si consiglia prima di effettuare la pulizia di fare una prova in un angolo poco visibile del prodotto. Per una buona conservazione del prodotto acquistato è consigliabile non esporlo alla luce diretta del sole che ne può alterare caratteristiche e colori. Eventuali imperfezioni della superficie del cuoio sono una naturale caratteristica dello stesso che ne garantisce l'originalità.

Certificazioni materiali

Cuoio toscano

Il Cuoio Toscano non teme di mostrare i segni lasciati dal tempo che lo rendono un prodotto unico. È un materiale ricavato dalla pelle di animali che hanno subito un processo denominato "concia al vegetale" con tannini naturali e con l'ausilio di prodotti biologicamente compatibili sia per la tintura in botte che per la rifinitura. Eventuali imperfezioni, segni, cicatrici, macchie della superficie del Cuoio Toscano sono una naturale caratteristica dello stesso che ne garantisce l'originalità.