

MIDJ INITALY



Sedia Calla S M_X PP

design Fabrizio Batoni, 2019

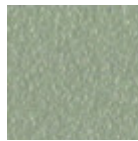
Calla sedia su trespolo fisso a quattro razze in acciaio verniciato. Sedile in polipropilene. La sedia è adatta per uso esterno. Opzionale: cuscino fisso per la seduta rivestito in pelle, similpelle o tessuto. La sedia è disponibile anche nella versione con braccioli e rivestita, con e senza braccioli.

Colori e materiali

Struttura



Metallo bianco



Metallo corda



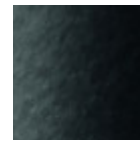
Metallo giallo
pastello



Metallo grafite



Metallo Bronzo



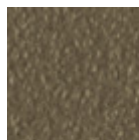
Metallo nero



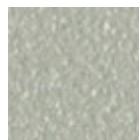
Metallo azzurro



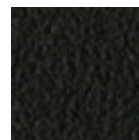
Metallo blu oceano



Metallo fango



Metallo grigio chiaro



Metallo Marrone



Metallo ocra



Metallo rosa cipria



Metallo rosso



Metallo verde salvia



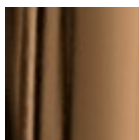
Cromato



Oro rosa

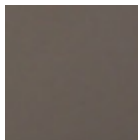


Nichel Nero



Bronzo dorato

Rivestimento



Polipropilene

9 Colori

Allunghe



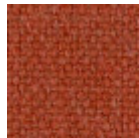
Tessuto Bubble

14 Colori



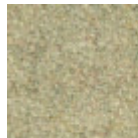
Tessuto Carabù

15 Colori



Tessuto Cotton Club

13 Colori



Tessuto Fenix Wool

13 Colori



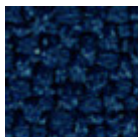
Tessuto Hot

14 Colori



Tessuto Main Line Flax

16 Colori



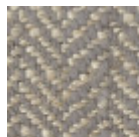
Tessuto Mirage

6 Colori



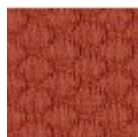
Tessuto Scubidù

10 Colori



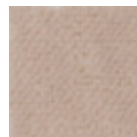
Tessuto Second

11 Colori



Tessuto Visual

11 Colori



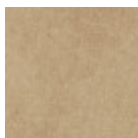
Velluto Superb

15 Colori



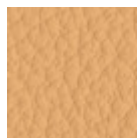
Similpelle Secret

22 Colori



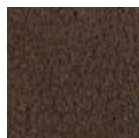
Similpelle Vintage

12 Colori



Pelle fiore

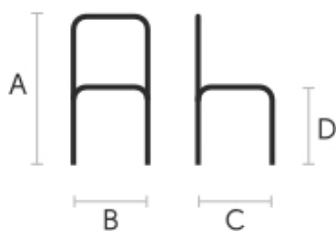
18 Colori



Pelle Vintage

4 Colori

Dimensioni



	cm	inch
A	79	31,1
B	47	18,5
C	53	20,9
D	47	18,5

Dati volumetrici

Peso 6 Kg

Volume 0.15 mc

Colli 1