

**MIDJ**  
INITALY



## Sgabello Trampoliere OUT H65 / H75

design Roberto Paoli, 2013

Lo sgabello Trampoliere con base a quattro gambe in acciaio verniciato è disponibile in due diverse altezze H65 cm (25.6 in) e H75 cm (29.5 in).

Impilabile fino a quattro unità, è adatto ad uso esterno.

### Colori e materiali

#### Struttura



Metallo bianco



Metallo nero



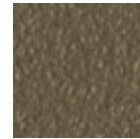
Metallo corda



Metallo Marrone



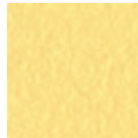
Metallo grafite



Metallo fango



Metallo Bronzo



Metallo giallo  
pastello



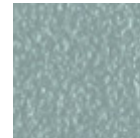
Metallo ocre



Metallo rosso



Metallo verde salvia



Metallo azzurro



Metallo blu oceano

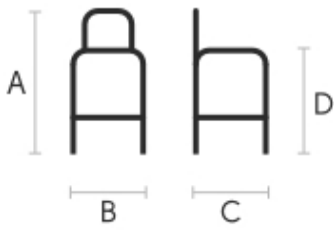


Metallo grigio chiaro



Metallo rosa cipria

### Dimensioni



## Dati volumetrici

**Peso** 8.1 Kg

**Volume** 0.20 mc

**Colli** 1

	<b>A</b> <b>(cm)</b> (inch)	<b>B</b> <b>(cm)</b> (inch)	<b>C</b> <b>(cm)</b> (inch)	
<b>H65</b> <b>(cm)</b> (inch)	76 29.9	46 18.1	42 16.5	65 25.6
<b>H75</b> <b>(cm)</b> (inch)	86 33.9	46 18.1	42 16.5	75 29.5

## Download

[3D Trampoliere \(zip\)](https://www.midj.com/images/uploads/resources/trampoliere-h65-h75-out-3d.zip) - <https://www.midj.com/images/uploads/resources/trampoliere-h65-h75-out-3d.zip>