

# MULA

by e-ggs



Mula si fa riconoscere per l'ampio schienale dove due curiose orecchie si stringono sui fianchi, svelando un profilo dinamico della sedia. L'imbottitura della scocca diventa parte stessa del disegno, offrendo un prodotto realizzato con la massima cura, pensato per durare e piacere nel tempo.

Mula is recognised by its large backrest where two interesting wings hug the sides, revealing the chair's dynamic profile. The body's padding becomes part of the design, offering a product made with the utmost care, designed to last and to please over time.

## DIMENSIONI | DIMENSIONS

### BASIC | BASIC

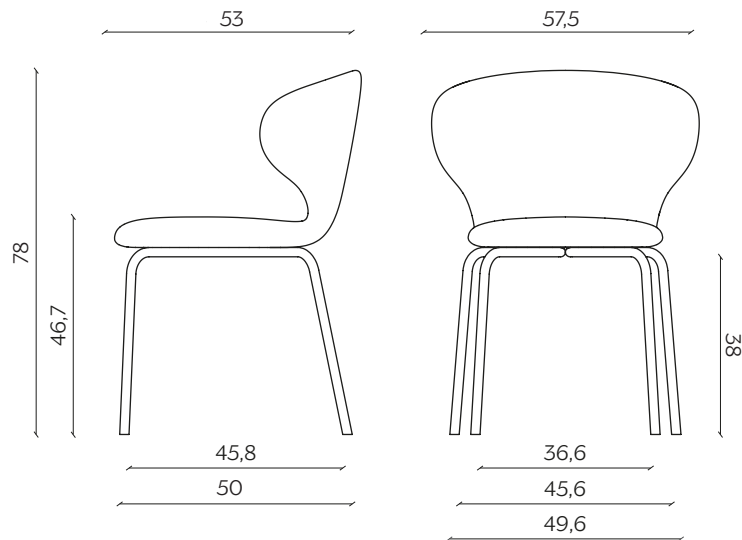
lunghezza | width: 57,5

larghezza | depth: 53 cm

altezza | height: 78 cm

altezza del sedile | seat height: 46,7 cm

impilabilità | stackability: sì (X3) | yes (X3)



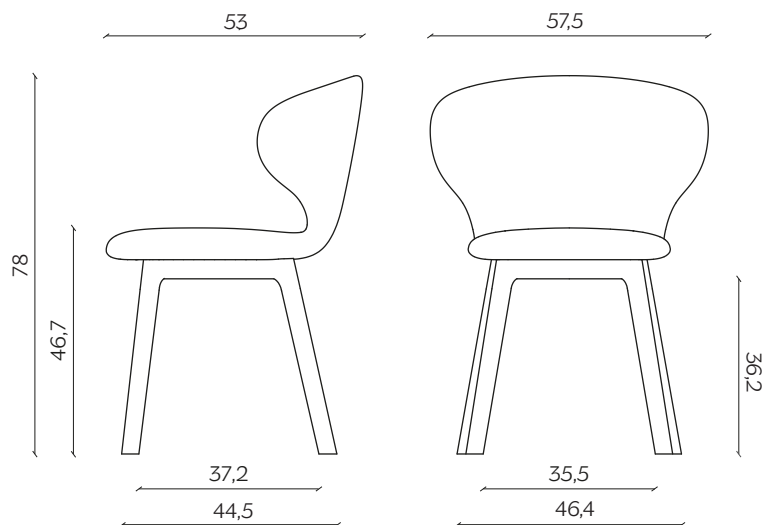
### GAMBE IN LEGNO | WOODEN LEGS

lunghezza | width: 57,5

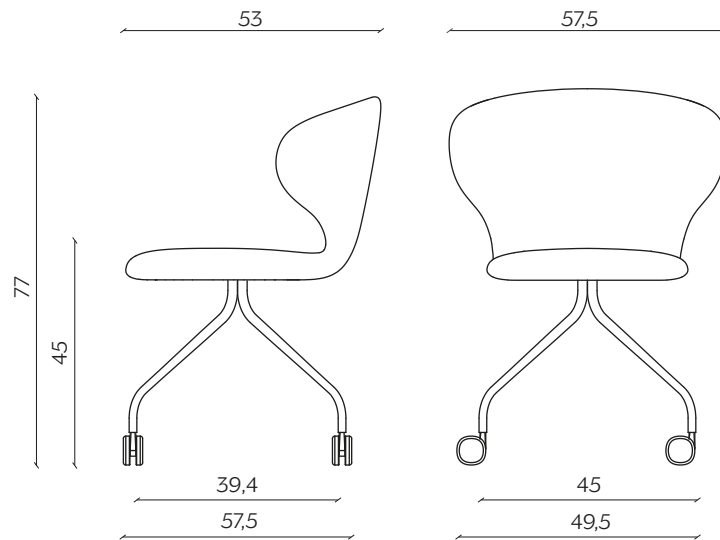
larghezza | depth: 53 cm

altezza | height: 78 cm

altezza del sedile | seat height: 46,7 cm



**UFFICIO | OFFICE**  
lunghezza | width: 57,5  
larghezza | depth: 53 cm  
altezza | height: 77 cm  
altezza del sedile | seat height: 45 cm



**AMBIENTE | ENVIRONMENT**  
interno | indoor

### DOWNLOAD | DOWNLOADS

la guida Cura e Manutenzione è disponibile su [miniforms.com](https://miniforms.com)  
Care and Maintenance guide is available at [miniforms.com](https://miniforms.com)

file 2D, 3D e fotografie sono disponibili su [miniforms.com](https://miniforms.com)  
2D, 3D files and hi-res images are available at [miniforms.com](https://miniforms.com)

# FINITURE | FINISHES

## GAMBE | LEGS

### Legno | Wood



Frassino  
Ash

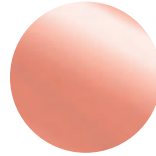


Frassino Nero  
Black Ash

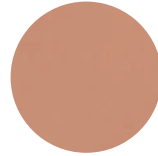


Zincato  
Zinc-coated

### Metallo | Metal

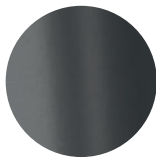


Rame  
Copper



Oro Rosa Opaco  
Rose Gold Matt

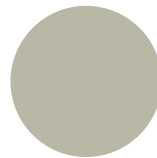
### Laccato | Lacquer



Laccato Antracite  
Anthracite Lacquered



Laccato Nero  
Black Lacquered



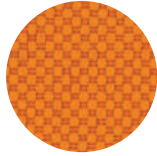
Laccato Grigio Seta  
Silk Grey Lacquered

# FINITURE | FINISHES

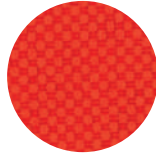
## TESSUTI | FABRICS

A

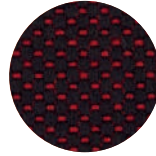
### Salò



Arancio  
Orange



Rosso  
Red



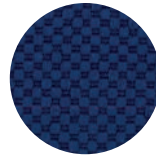
Marmellata  
Jam



Grigio Chiaro  
Light Grey

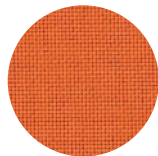


Marrone  
Brown

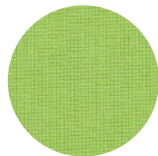


Blu Notte  
Midnight Blue

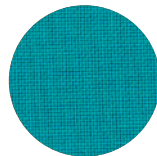
### Loop



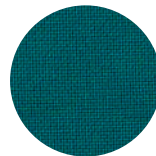
Arancione  
Orange



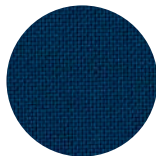
Lime



Turchese  
Turquoise



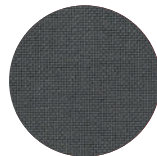
Ottanio  
Teal Green



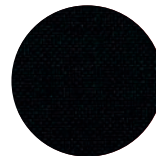
Blu Scuro  
Dark Blue



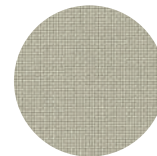
Testa di Moro  
Dark Brown



Grigio Fumo  
Smoke Grey



Nero  
Black



Avorio  
Ivory

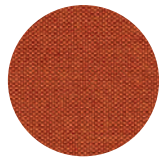
# TESSUTI | FABRICS

A

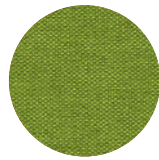
## Tramè



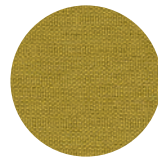
Beije



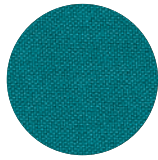
Arancio  
Orange



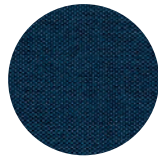
Mela  
Apple



Senape  
Mustard



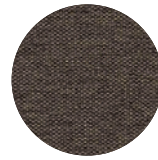
Pavone  
Peacock



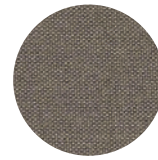
Blu Elettrico  
Electric Blue



Nero  
Black

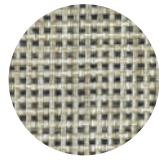


Crigio Scuro  
Dark Grey

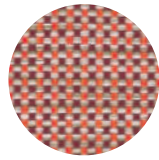


Tortora  
Dove Grey

## Madrid



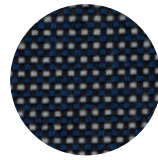
Burro  
Butter



Melograno  
Pomegranate



Menta  
Mint



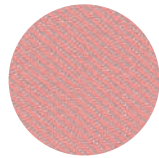
Notte  
Night

# FINITURE | FINISHES

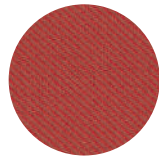
## TESSUTI | FABRICS

B

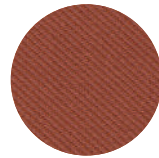
### Kvadrat Relate



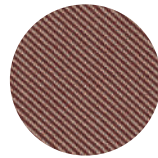
Rosa  
Pink



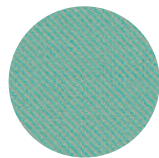
Rosso  
Red



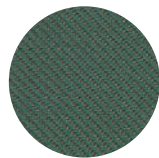
Terra  
Ground



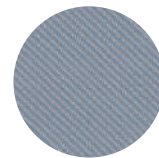
Snack



Menta  
Mint



Verde Bosco  
Forest Green



Nuvolo  
Cloudy

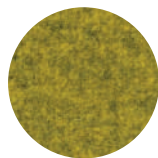


Grigio  
Grey

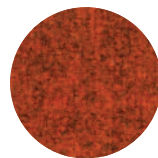
### Lanee



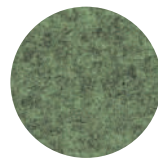
Grigio  
Grey



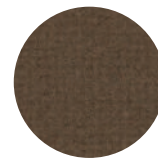
Giallo  
Yellow



Rosso  
Red



Menta  
Mint

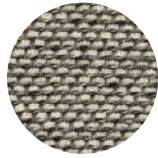


Marrone  
Brown

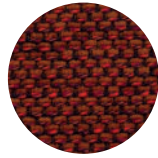
## TESSUTI | FABRICS

B

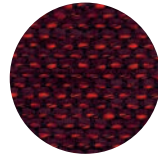
### Torrilana Cubbio



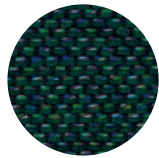
Sale e Pepe  
Salt and Pepper



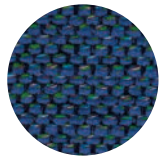
Ambra  
Amber



Bordeaux



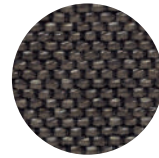
Verde Petrolio  
Petrol Green



Blu Elettrico  
Electric Blue

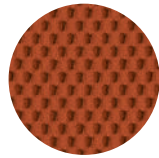


Castagna  
Walnut

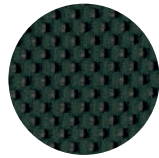


Tortora  
Dove Grey

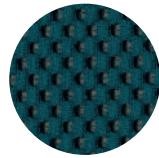
### Mesh



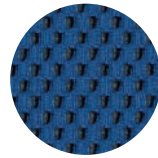
Rosso Corallo  
Coral Red



Verde Salvia  
Sage Green



Foglia di Tè  
Teal



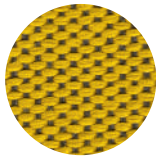
Blu Neon  
Neon Blue



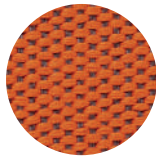
# TESSUTI | FABRICS

B

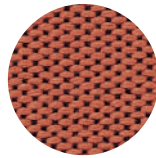
## Vescom Wilson



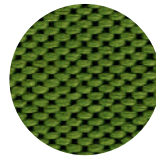
Ciallo Elettrico  
Electric Yellow



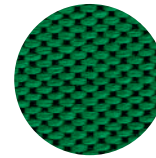
Energico  
Energetic



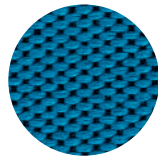
Rosé



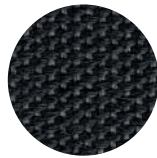
Laguna  
Lagoon



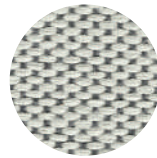
Prato  
Field



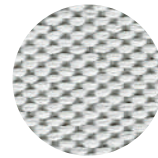
Zaffiro  
Sapphire



Grafite  
Graphite

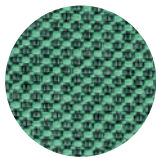


Sale e Pepe  
Salt and Pepper

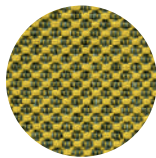


Neve  
Snow

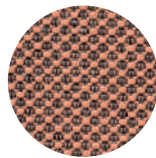
## Vescom Norfolk



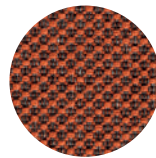
Latte e Menta  
Milk and Mint



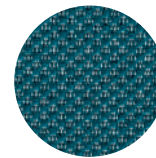
Ape  
Bee



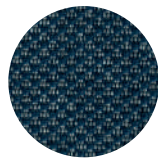
Rosa  
Pink



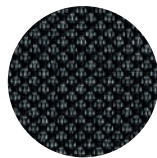
Mattone  
Brick



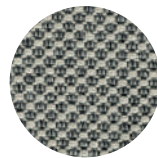
Petrolio  
Petrol-Green



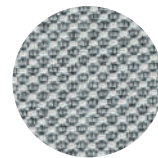
Notte  
Night



Antracite  
Anthracite



Sale e Pepe  
Salt and Pepper



Ghiaccio  
Ice

# FINITURE | FINISHES

## TESSUTI | FABRICS

C

### Shelter Velvet



Crema  
Cream



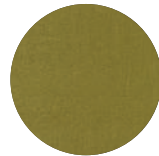
Rosa Intenso  
Intense Rose



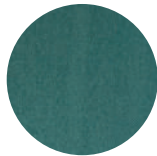
Terra di Siena  
Burnt Sienna



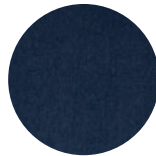
Cammello  
Camel



Verde  
Green



Turchese  
Turquoise

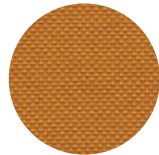


Blu Notte  
Midnight Blue

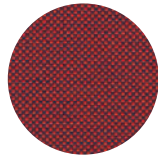


Testa di Moro  
Dark Brown

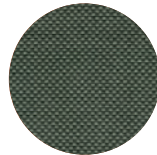
### Kvadrat Field 2



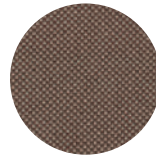
Zafferano  
Saffron-Yellow



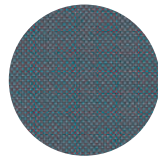
Ciliegia  
Cherry



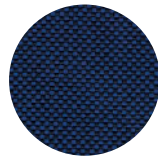
Menta  
Mint



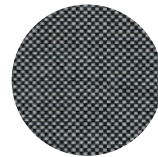
Nocciola  
Hazel



Zucchero  
Sugar

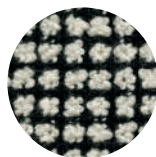


Blu  
Blue



Sale e Pepe  
Salt and Pepper

### Torrilana Brionne

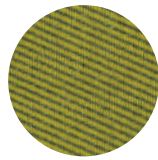


Black and White

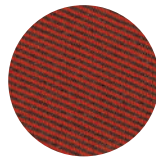
## TESSUTI | FABRICS

C

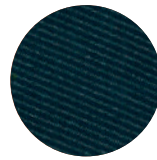
### Vescom Harding



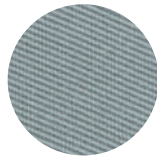
Ciallo  
Yellow



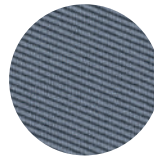
Rosso  
Red



Petrolio  
Blue-Green

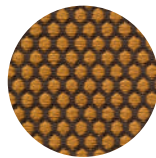


Grigio Chiaro  
Light Grey

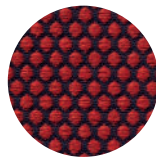


Nuvolo  
Cloudy

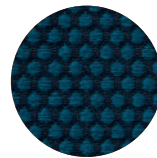
### Vescom Rolla



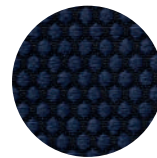
Mostarda  
Mustard



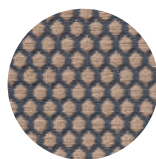
Ciliegia  
Cherry



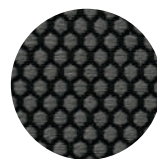
Blu Pavone  
Peacock



Blu Notte  
Midnight Blue



Latte  
Steamed Milk



Antracite  
Anthracite

### Torrilana Rakam



Bacca  
Berry

# FINITURE | FINISHES

## TESSUTI | FABRICS

D

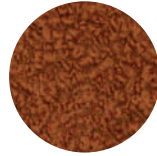
### Cloud



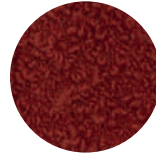
Panna  
Cream



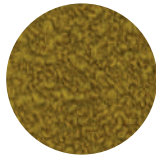
Noce  
Walnut



Nocciola  
Hazelnut



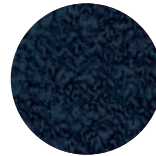
Bordeaux



Senape  
Mustard

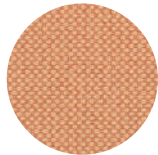


Petrolio  
Blue-Green

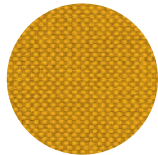


Blu Notte  
Night Blue

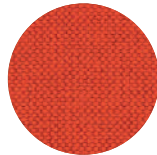
### Maharam Merit



Salmone  
Salmon



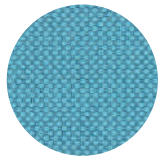
Ciallo  
Yellow



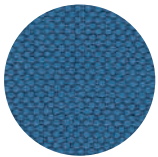
Rosso Corallo  
Coral Red



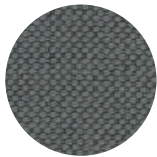
Marrone  
Brown



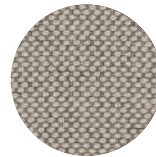
Celeste  
Sky Blue



Blu Cobalto  
Cobalt Blue



Grigio  
Grey

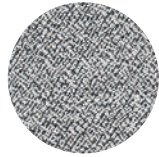


Sale e Pepe  
Salt and Pepper

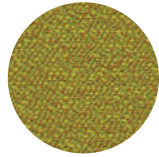
TESSUTI | FABRICS

D

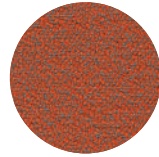
Rohi Sera



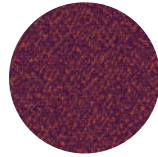
Pepper



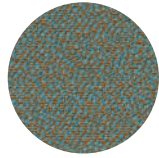
Tivoli



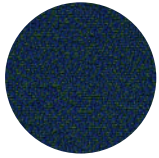
Glow



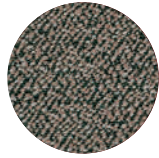
Berry



Mirage



Mare

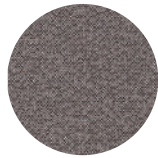


Walnut

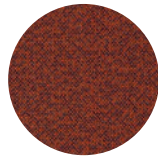


Rosewood

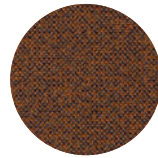
Rohi Mica



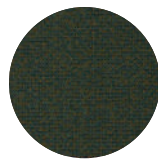
Pepper



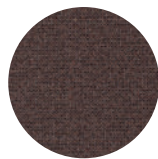
Indio



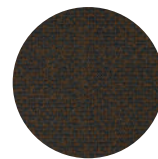
Amber



Jungle



Mud



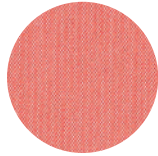
Secret

# FINITURE | FINISHES

## TESSUTI | FABRICS

E

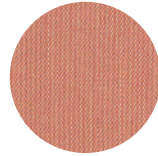
### Kvadrat Steelcut Trio 3



Arancia Rossa  
Red Orange



Pavone  
Peacock



Pesca  
Peach



Sale e Pepe  
Salt and Pepper



Elettricità  
Electricity