

# IOLA

by e-ggs



lola vive il Design con un approccio internazionale, concentrandosi sull'ergonomia delle forme, mantenendo un aspetto curato e caratterizzante. Abbiamo dato alla scocca la forma di un guscio, producendola in poliuretano espanso. Sotto consiglio dei più esigenti, poi, le abbiamo tirato le orecchie così sono usciti due grandi braccioli. lola sa di moda, ma si propone come un classico contemporaneo.

lola shows off design with an international approach, focusing on the ergonomics of the form, ensuring a careful look, one with character. We have given the body the shape of a shell, producing it in expanded polyurethane. Then, on the advice of the hardest to please, we pulled the wings and then the two large arms came out. lola hints at fashion but comes across as a modern classic.

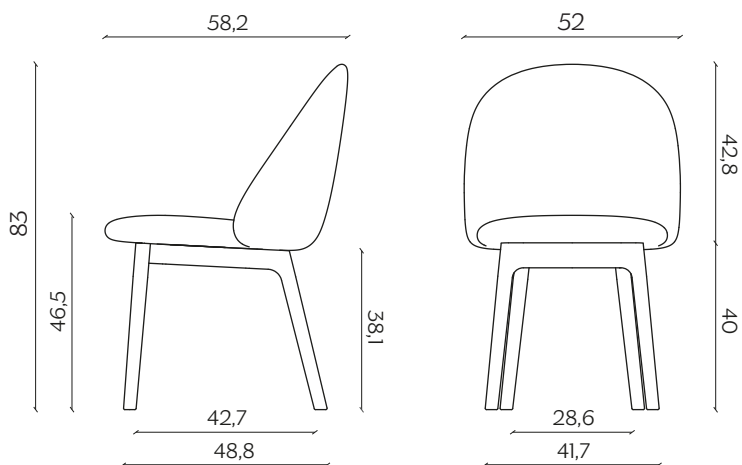
**GAMBE IN LEGNO | WOODEN LEGS**

lunghezza | width: 52 cm

larghezza | depth: 58,2 cm

altezza | height: 83 cm

altezza del sedile | seat height: 46,5 cm



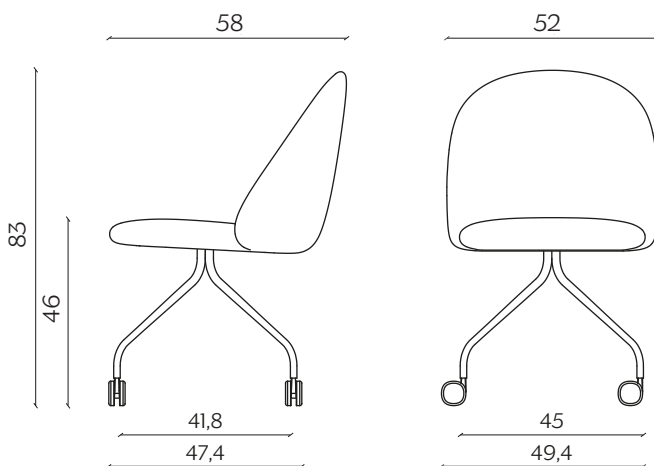
**UFFICIO | OFFICE**

lunghezza | width: 52 cm

larghezza | depth: 58 cm

altezza | height: 83 cm

altezza del sedile | seat height: 46 cm



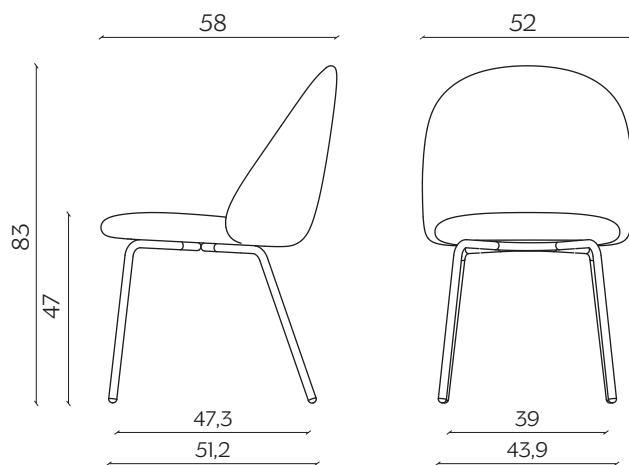
**BASIC | BASIC**

lunghezza | width: 52 cm

larghezza | depth: 58 cm

altezza | height: 83 cm

altezza del sedile | seat height: 47 cm



# FINITURE | FINISHES

## GAMBE | LEGS

### Legno | Wood



Frassino  
Ash

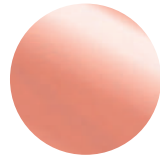


Frassino Nero  
Black Ash

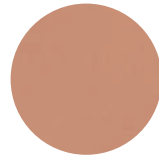


Zincato  
Zinc-coated

### Metallo | Metal

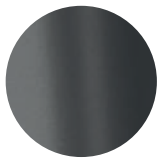


Rame  
Copper



Oro Rosa Opaco  
Rose Gold Matt

### Laccato | Lacquer



Laccato Antracite  
Anthracite Lacquered



Laccato Nero  
Black Lacquered



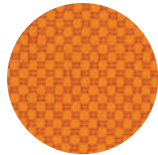
Laccato Grigio Seta  
Silk Grey Lacquered

# FINITURE | FINISHES

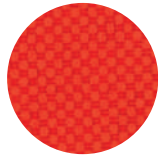
## TESSUTI | FABRICS

A

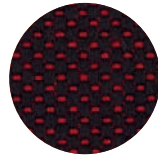
### Salò



Arancio  
Orange



Rosso  
Red



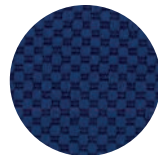
Marmellata  
Jam



Grigio Chiaro  
Light Grey

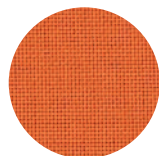


Marrone  
Brown

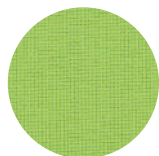


Blu Notte  
Midnight Blue

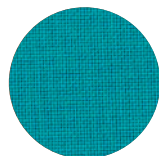
### Loop



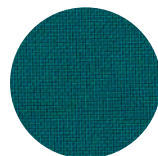
Arancione  
Orange



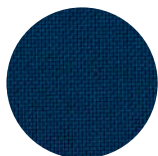
Lime



Turchese  
Turquoise



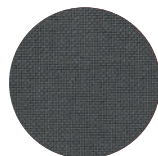
Ottanio  
Teal Green



Blu Scuro  
Dark Blue



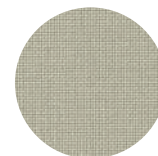
Testa di Moro  
Dark Brown



Grigio Fumo  
Smoke Grey



Nero  
Black



Avorio  
Ivory

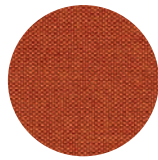
# TESSUTI | FABRICS

A

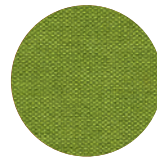
## Tramè



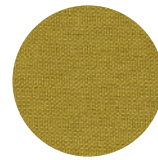
Beije



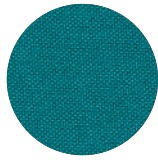
Arancio  
Orange



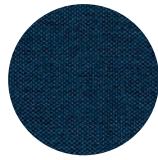
Mela  
Apple



Senape  
Mustard



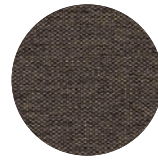
Pavone  
Peacock



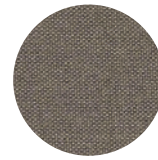
Blu Elettrico  
Electric Blue



Nero  
Black

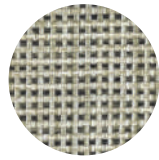


Crigio Scuro  
Dark Grey

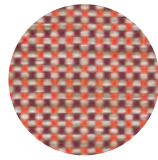


Tortora  
Dove Grey

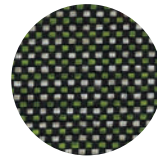
## Madrid



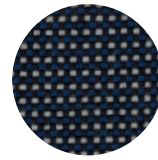
Burro  
Butter



Melograno  
Pomegranate



Menta  
Mint



Notte  
Night

# FINITURE | FINISHES

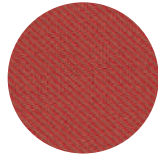
## TESSUTI | FABRICS

B

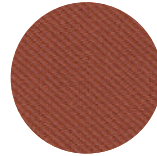
### Kvadrat Relate



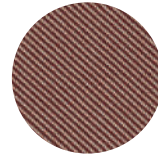
Rosa  
Pink



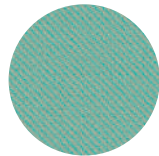
Rosso  
Red



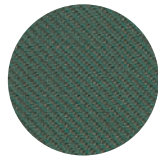
Terra  
Ground



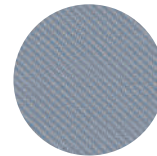
Snack



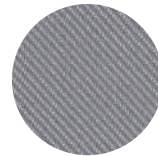
Menta  
Mint



Verde Bosco  
Forest Green



Nuvolo  
Cloudy

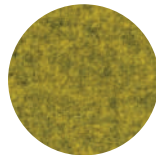


Grigio  
Grey

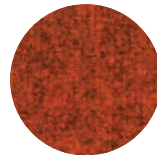
### Lanee



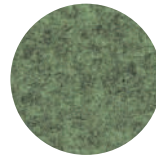
Grigio  
Grey



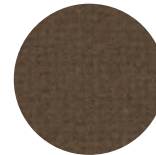
Giallo  
Yellow



Rosso  
Red



Menta  
Mint

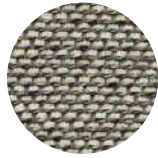


Marrone  
Brown

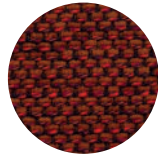
## TESSUTI | FABRICS

B

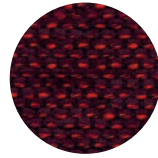
### Torrilana Cubbio



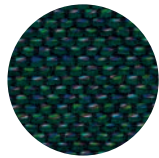
Sale e Pepe  
Salt and Pepper



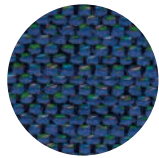
Ambra  
Amber



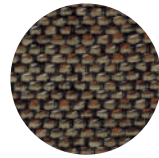
Bordeaux



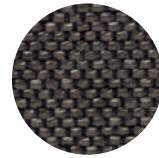
Verde Petrolio  
Petrol Green



Blu Elettrico  
Electric Blue

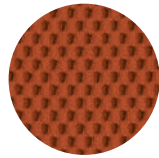


Castagna  
Walnut

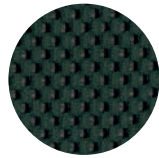


Tortora  
Dove Grey

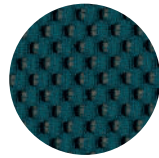
### Mesh



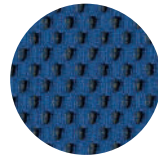
Rosso Corallo  
Coral Red



Verde Salvia  
Sage Green



Foglia di Tè  
Teal



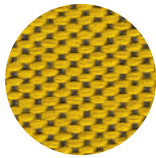
Blu Neon  
Neon Blue



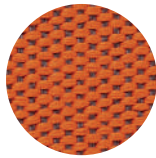
# TESSUTI | FABRICS

B

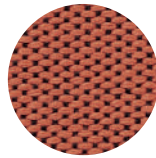
## Vescom Wilson



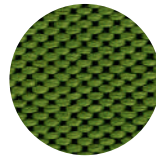
Ciallo Elettrico  
Electric Yellow



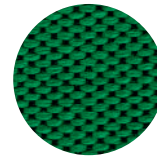
Energico  
Energetic



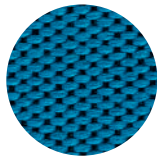
Rosé



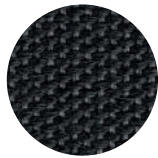
Laguna  
Lagoon



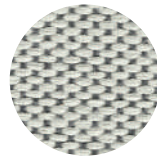
Prato  
Field



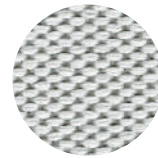
Zaffiro  
Sapphire



Grafite  
Graphite

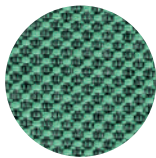


Sale e Pepe  
Salt and Pepper

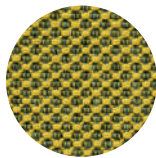


Neve  
Snow

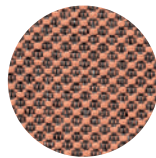
## Vescom Norfolk



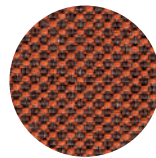
Latte e Menta  
Milk and Mint



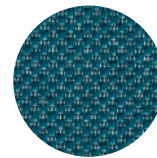
Ape  
Bee



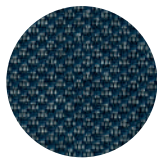
Rosa  
Pink



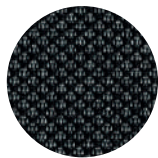
Mattone  
Brick



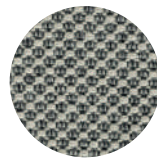
Petrolio  
Petrol-Green



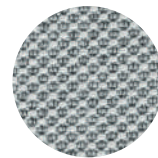
Notte  
Night



Antracite  
Anthracite



Sale e Pepe  
Salt and Pepper



Ghiaccio  
Ice

# FINITURE | FINISHES

## TESSUTI | FABRICS

C

### Shelter Velvet



Crema  
Cream



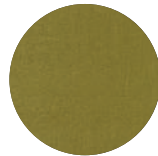
Rosa Intenso  
Intense Rose



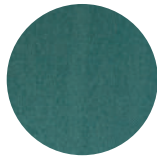
Terra di Siena  
Burnt Sienna



Cammello  
Camel



Verde  
Green



Turchese  
Turquoise

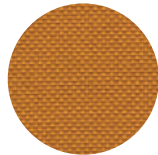


Blu Notte  
Midnight Blue

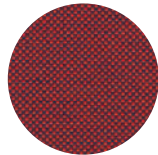


Testa di Moro  
Dark Brown

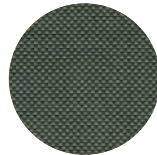
### Kvadrat Field 2



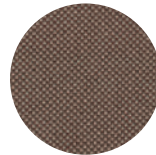
Zafferano  
Saffron-Yellow



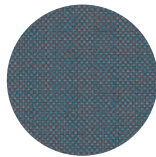
Ciliegia  
Cherry



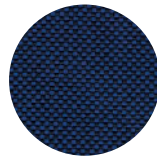
Menta  
Mint



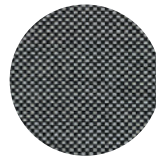
Nocciola  
Hazel



Zucchero  
Sugar

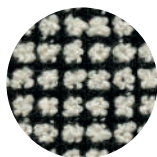


Blu  
Blue



Sale e Pepe  
Salt and Pepper

### Torrilana Brionne

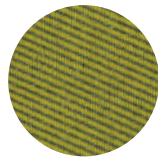


Black and White

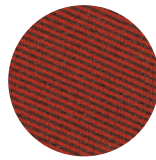
## TESSUTI | FABRICS

C

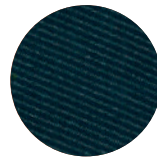
### Vescom Harding



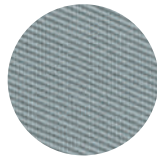
Ciallo  
Yellow



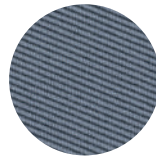
Rosso  
Red



Petrolio  
Blue-Green

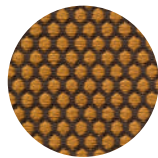


Grigio Chiaro  
Light Grey

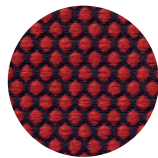


Nuvolo  
Cloudy

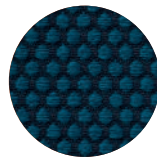
### Vescom Rolla



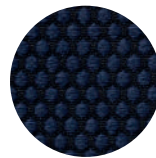
Mostarda  
Mustard



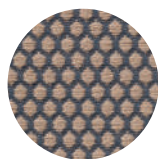
Ciliegia  
Cherry



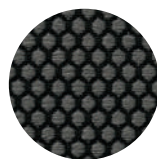
Blu Pavone  
Peacock



Blu Notte  
Midnight Blue



Latte  
Steamed Milk



Antracite  
Anthracite

### Torrilana Rakam



Bacca  
Berry

# FINITURE | FINISHES

## TESSUTI | FABRICS

D

### Cloud



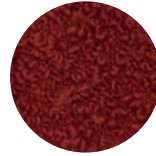
Panna  
Cream



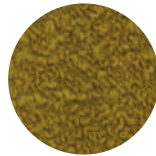
Noce  
Walnut



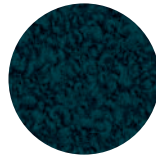
Nocciola  
Hazelnut



Bordeaux



Senape  
Mustard

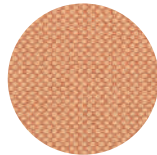


Petrolio  
Blue-Green

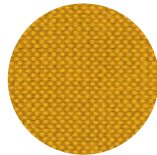


Blu Notte  
Night Blue

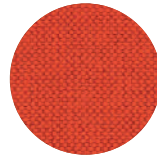
### Maharam Merit



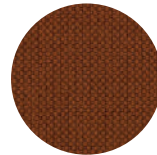
Salmone  
Salmon



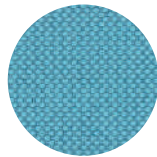
Ciallo  
Yellow



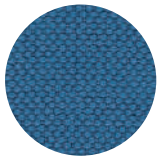
Rosso Corallo  
Coral Red



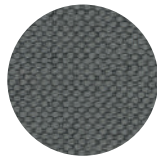
Marrone  
Brown



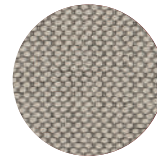
Celeste  
Sky Blue



Blu Cobalto  
Cobalt Blue



Grigio  
Grey

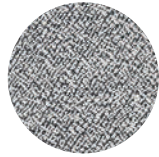


Sale e Pepe  
Salt and Pepper

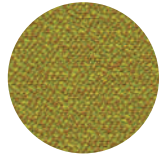
TESSUTI | FABRICS

D

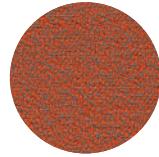
Rohi Sera



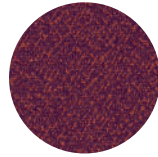
Pepper



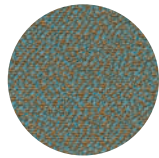
Tivoli



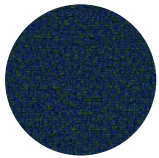
Glow



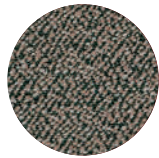
Berry



Mirage



Mare

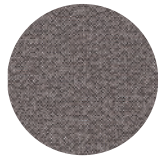


Walnut

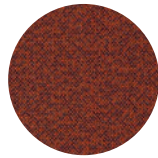


Rosewood

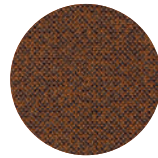
Rohi Mica



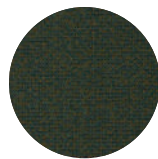
Pepper



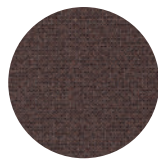
Indio



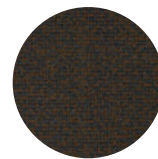
Amber



Jungle



Mud



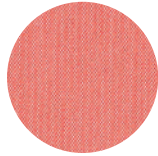
Secret

# FINITURE | FINISHES

## TESSUTI | FABRICS

E

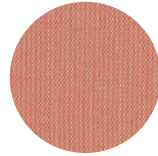
### Kvadrat Steelcut Trio 3



Arancia Rossa  
Red Orange



Pavone  
Peacock



Pesca  
Peach



Sale e Pepe  
Salt and Pepper



Elettricità  
Electricity